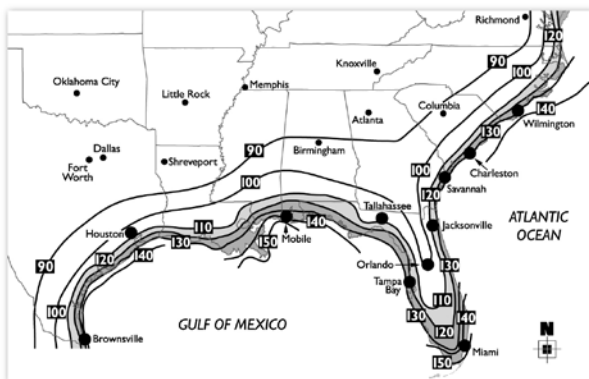


Sto Hurricane Impact Systems Protection for Coastal Construction

Hurricanes threaten North America annually, striking coastal areas in 82 of the last 100 years. From Dennis to Katrina, Rita to Wilma, the new millennium brought 27 named storms and \$56.8 billion in insurance losses. Lives, homes, and businesses destroyed.

Sto Hurricane Impact (HI) Systems provide a full range of exterior cladding options to protect against hurricane and tropical storm winds, water intrusion, and windborne debris, a major cause of building envelope failure. All systems meet the stringent Miami-Dade County, Florida criteria for impact resistance, air and water infiltration, and wind load resistance. Other key features of the systems include:

- Priced competitively with other claddings
- Fire-resistance up to two hours
- Lightweight
- Backed by Sto's Limited Labor & Materials Warranty
- Technical Support in person, on the phone and on-line

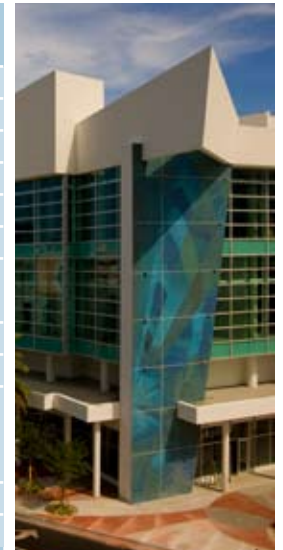


source: 2003 International Building Code

Number in Black Box is Basic Wind Speed (mph)†

All systems may be installed economically on a variety of construction types—metal frame with gypsum sheathing, wood or steel frame with plywood sheathing, or concrete masonry. Select from Sto's wide range of decorative and protective wall finish systems for outstanding appearance and superior protection against some of the most severe weather in North America.

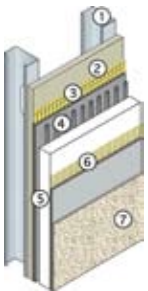
	Impact Resistance Rating			Construction Type	Construction			Sheathing Type	Design Pressure Rating (psf)	NOA Approval**
	Large	Small	Essential*		Steel	Wood	CMU			
StoTherm® Systems										
StoTherm H-AT	X	X		I, II, III, IV, V	X			Fiberock® Brand	+/- 70	X
StoTherm HI-AT-E***	X	X	X	I, II, III, IV, V	X			Fiberock® Brand	+/- 145	X
StoTherm HI-DG1	X	X		I, II, III, IV, V	X			Dens-Glass® Gold	+/- 80	X
StoTherm HI-G2	X	X		I, II, III, IV, V	X			Gypsum	+/- 125	X
StoTherm HI-CM	X	X		I, II, III, IV, V			X	N/A	+/- 100	X
StoTherm HI-Ply	X	X		III, V	X	X		Plywood	+/- 100 (Wood) +/- 74 (Steel)	X
StoTherm HI-FR Ply	X	X		III, V	X			Fire-Resistant Plywood	+/- 70	X
StoTherm HI-AT		X		I, II, III, IV, V	X			Fiberock® Brand	+/- 70	X
StoTherm HI-G		X		I, II, III, IV, V	X			Gypsum	+/- 65 (Note A) +/- 80 (Note B) +/- 125 (Note C)	X
StoPowerwall™ Systems										
StoPowerwall HI	X	X		I, II, III, IV, V	X			Dens-Glass® Gold	+/- 90	X



* Meets ASTM E 1996-04 Missile Level E (Essential Facilities), Zone 4, when tested per ASTM E 1886-04
 ** For Specific Miami-Dade County, Florida NOA approvals, please refer to www.miami-dade.gov/buildingcode, Approved Product Search, High Velocity Hurricane Zone, Sto Corp.
 *** Meets Level E requirements for Essential Facilities. Not only available for new construction; HI-AT-E may be used as an encapsulation system for existing buildings.

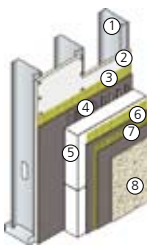
Notes:
 A: 18 ga. Studs w/ 1/2" sheathing
 B: 16 ga. Studs w/ 5/8" sheathing
 C: 16 ga. Studs w/ 5/8" sheathing and 1-1/2" EPS

StoTherm H-AT System



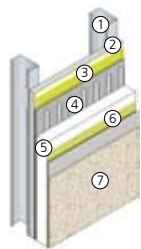
- 3-5/8" 18 ga. steel studs
- 1/2" Fiberock® Brand Aqua-Tough™ Sheathing Panel
- Sto Armor Mat XX embedded in Sto Base Coat
- Sto BTS or
- Sto Primer/Adhesive-B, or Sto Primer/Adhesive
- Sto Adhesive:
- Sto BTS or
- Sto Primer/Adhesive-B, or Sto Primer/Adhesive
- Minimum 1" thick EPS insulation
- Sto Mesh embedded in Sto Base Coat:
- Sto BTS or
- Sto Primer/Adhesive-B, or Sto Primer/Adhesive
- Sto Finish

StoTherm HI-AT-E System



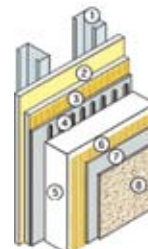
- 6", 16 ga. steel studs
- 5/8" Fiberock® Brand Aqua-Tough™ sheathing
- Sto Armor Mat XX embedded in Sto Primer/Adhesive-B
- Sto Primer/Adhesive-B Adhesive
- Minimum 3" Sto EPS insulation board
- Sto Armor Mat XX embedded in Sto Primer/Adhesive-B
7. Sto Mesh embedded in Sto Primer/Adhesive-B
- Sto Finish

StoTherm HI-DG1 System



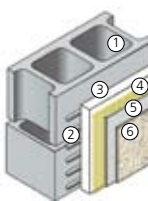
- 3-5/8" 18 ga. steel studs
- 5/8" Georgia Pacific Dens-Glass® Gold Sheathing
- Sto Armor Mat XX embedded in Sto Primer/Adhesive-B
- Sto Primer/Adhesive-B Adhesive
- Minimum 1" thick EPS insulation
- Sto Mesh embedded in Sto Primer/Adhesive-B Base Coat
- Sto Finish

StoTherm HI-G2 System



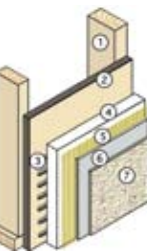
- 3-5/8" 18 ga. steel studs
- 2 layers 5/8" Exterior grade gypsum sheathing
- Sto Intermediate Mesh with Sto BTS or Sto Primer Adhesive-B
- Sto Adhesive:
Sto BTS or
Sto Primer Adhesive-B
- Minimum 2" thick EPS insulation
- Sto Intermediate Mesh
- Sto Base Coat
Sto BTS or
Sto Primer Adhesive-B
- Sto Finish

StoTherm HI-CM System



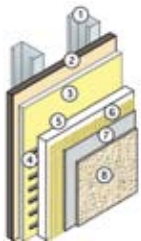
- Normal 8" hollow core concrete blocks
- Sto Primer/Adhesive-B (adhesive)
- Minimum 1" thick EPS insulation
- Sto Mesh
- Sto Primer/Adhesive-B Base Coat
- Sto Finish

StoTherm HI-Ply System



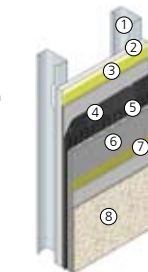
- 2x4 wood studs or 3-5/8" 18 ga. steel studs
- 5/8" CDX 5-ply plywood
- Sto Dispersion Adhesive
- Minimum 1" thick EPS insulation
- Sto Mesh
- Sto Primer/Adhesive-B Base Coat
- Sto Finish

StoTherm HI-FR Ply System



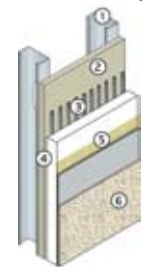
- 3-5/8" 18 ga. steel studs
- 5/8" FRT 5-ply plywood
- 1/2" Exterior grade gypsum sheathing
- Sto Primer/Adhesive-B adhesive
- Minimum 3/4" thick EPS insulation
- Sto Mesh
- Sto Primer Adhesive-B Base Coat
- Sto Finish

StoPowerwall HI System



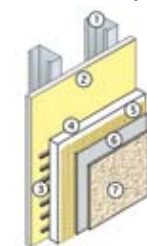
- 3-5/8" 18 ga. steel studs
- 5/8" Georgia Pacific Dens-Glass® Gold Sheathing
- Sto Armor Mat XX Mesh embedded in Sto BTS
- One layer, Type D, No. 15 asphalt saturated kraft building paper
- 2.5 lbyd² galvanized expanded metal lath
- StoPowerwall Stucco, 5/8" thick
- Sto Mesh embedded in Sto BTS
- StoPowerwall Finish

StoTherm HI-AT System



- 3-5/8" 18 ga. steel studs
- 1/2" Fiberock® Brand Aqua-Tough™ Sheathing Panel
- Sto Adhesive:
- Sto BTS or
- Sto Primer/Adhesive-B
- Minimum 1" thick EPS insulation
- Sto Mesh embedded in Sto Base Coat:
- Sto BTS or
- Sto Primer/Adhesive-B
- Sto Finish

StoTherm HI-G System



- 3-5/8" 18 ga. steel studs or 6" 16 ga. steel studs
- 1/2" or 5/8" Exterior grade gypsum sheathing
- Sto Adhesive:
Sto BTS or
Sto Primer Adhesive-B
- Minimum 3/4" thick EPS insulation
- Sto Mesh
- Sto Base Coat
Sto BTS or
Sto Primer Adhesive-B
- Sto Finish

†Sto Hurricane Impact (HI) Systems are recommended for coastal construction where the risk of hurricanes is high.

Sto Corp.
 3800 Camp Creek Parkway
 Building 1400, Suite 120
 Atlanta, GA 30331

Phone 404-346-3666
 Toll Free 1-800-221-2397
 Fax 404-346-3119
 www.stocorp.com

ATTENTION
 Sto products are intended for use by qualified professional contractors, not consumers, as a component of a larger construction assembly as specified by a qualified design professional, general contractor or builder. They should be installed in accordance with those specifications and Sto's instructions. Sto Corp. disclaims all, and assumes no, liability for on-site inspections, for its products applied improperly, or by unqualified persons or entities, or as part of an improperly designed or constructed building, for the nonperformance of adjacent building components or assemblies, or for other construction activities beyond Sto's control. Improper use of Sto products or use as part of an improperly designed or constructed larger assembly or building may result in serious damage to this product, and to the structure of the building or its components. **STO CORP DISCLAIMS ALL WARRANTIES EXPRESSED OR IMPLIED EXCEPT FOR EXPLICIT LIMITED WRITTEN WARRANTIES ISSUED TO AND ACCEPTED BY BUILDING OWNERS IN ACCORDANCE WITH STO'S WARRANTY PROGRAMS WHICH ARE SUBJECT TO CHANGE FROM TIME TO TIME.** For the fullest, most current information on proper application, clean-up, mixing and other specifications and warranties, cautions and disclaimers, please refer to the Sto Corp. website, www.stocorp.com.