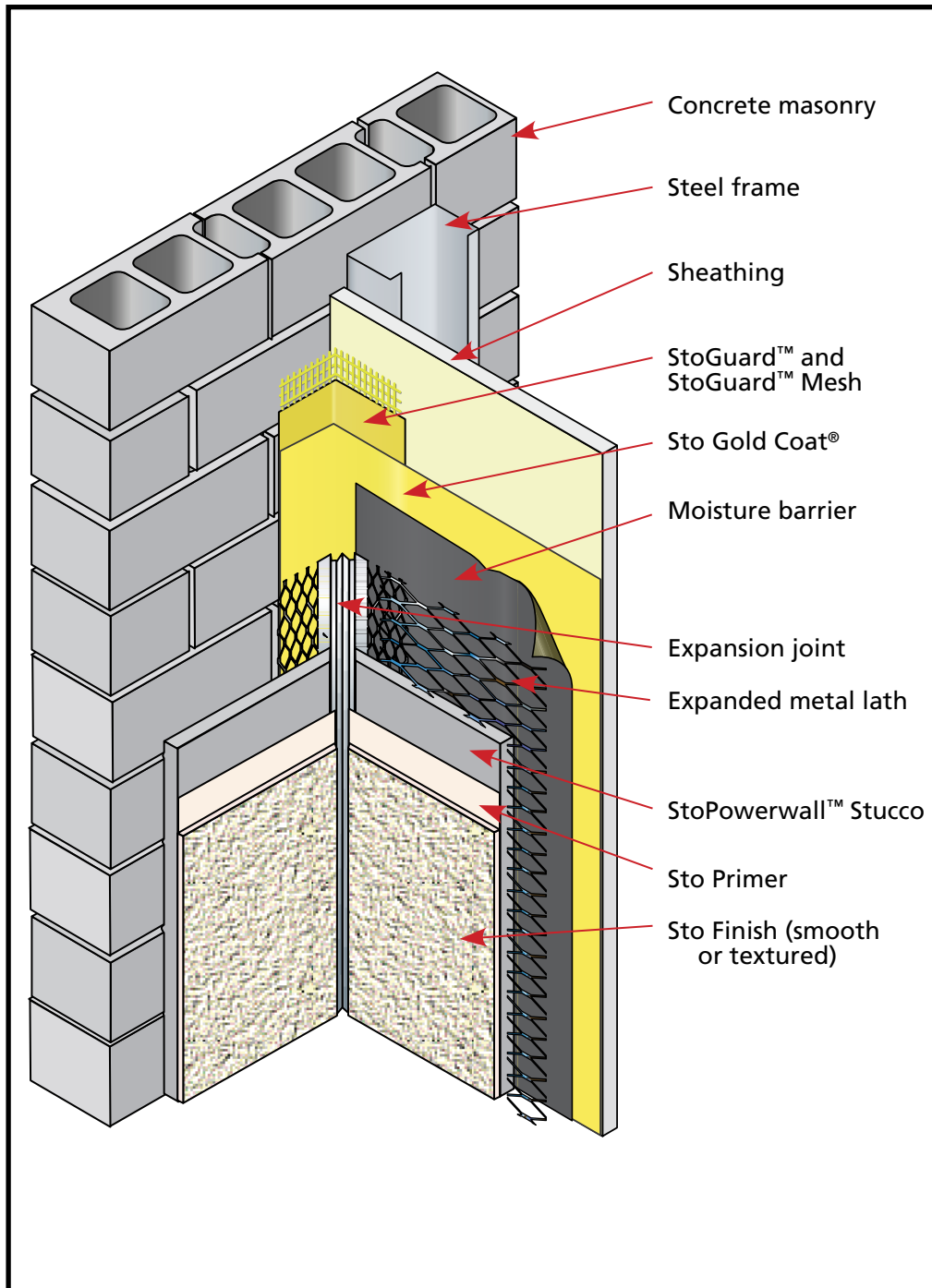


StoPowerwall™ Stucco with StoGuard™ Waterproofing/Air Barrier Joint at Inside Corner: Different Substrates

Date: October 2007

**Notes:**

1. Install Sto Gold Fill approximately 4" (100 mm) on to each face and trowel in StoGuard Mesh. (StoGuard Mesh is not recommended over masonry substrate.) Do not extend StoGuard on CMU beyond the expanded flange of the accessory.
2. Apply Sto Gold Coat over Sto Gold Fill and sheathing substrate.
3. Inside corner joints are not recommended where the substrate construction on either side of the corner is the same.
4. StoPowerwall Stucco applied directly to CMU functions as an air and moisture resistant assembly.

ATTENTION

Sto products are intended for use by qualified professional contractors, not consumers, as a component of a larger construction assembly as specified by a qualified design professional, general contractor or builder. They should be installed in accordance with those specifications and Sto's instructions. Sto Corp. disclaims all, and assumes no, liability for on-site inspections, for its products applied improperly, or by unqualified persons or entities, or as part of an improperly designed or constructed building, for the nonperformance of adjacent building components or assemblies, or for other construction activities beyond Sto's control. Improper use of Sto products or use as part of an improperly designed or constructed larger assembly or building may result in serious damage to Sto products, and to the structure of the building or its components. **STO CORP. DISCLAIMS ALL WARRANTIES EXPRESS OR IMPLIED EXCEPT FOR EXPLICIT LIMITED WRITTEN WARRANTIES ISSUED TO AND ACCEPTED BY BUILDING OWNERS IN ACCORDANCE WITH STO'S WARRANTY PROGRAMS WHICH ARE SUBJECT TO CHANGE FROM TIME TO TIME.** For the fullest, most current information on proper application, clean-up, mixing and other specifications and warranties, cautions and disclaimers, please refer to the Sto Corp. website, www.stocorp.com.

www.stocorp.com